

OUT-PARCEL TO LAKE WORTH PLAZA

A SUBDIVISION OF A PORTION OF THE NORTHEAST 1/4 OF SECTION 27, TOWNSHIP 44 SOUTH, RANGE 42 EAST,
PALM BEACH COUNTY, FLORIDA
FEBRUARY 2008

STATE OF FLORIDA) SS
COUNTY OF PALM BEACH)

THIS PLAT WAS FILED FOR RECORD
AT _____ M. THIS _____ DAY
OF _____ 2008 AND DULY
RECORDED IN PLAT BOOK NO. _____
ON PAGES _____ AND _____

SHARON R. BOCK
CLERK AND COMPTROLLER

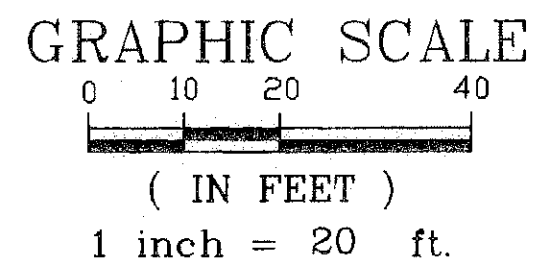
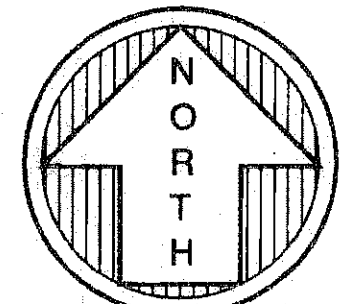
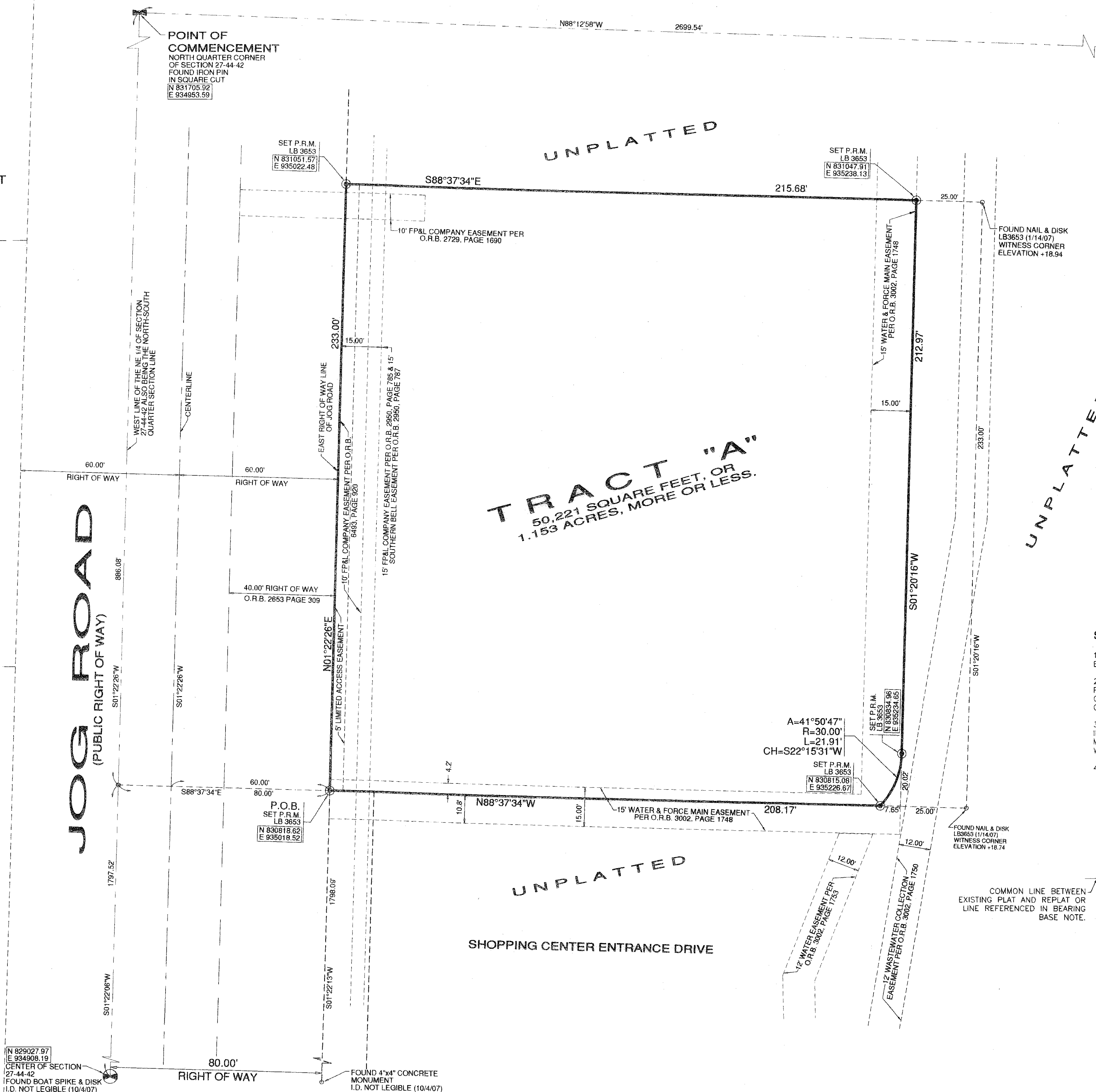
BY: _____ DC

REV. 1: AMEND PER COUNTY COMMENTS

LAKE WORTH DRAINAGE DISTRICT
CANAL L-12

BLOCK 30
PORTION OF TRACT 1
PALM BEACH FARMS COMPANY PLAT NO. 3
PLAT BOOK 2 PAGE 45

VILLAGE OF TURNBERRY
PLAT BOOK 37 PAGES 186 & 187



LEGEND:

P.O.B.	= DENOTES POINT OF BEGINNING
O.R.B.	= DENOTES OFFICIAL RECORD BOOK
P.B.	= DENOTES PLAT BOOK
P.C.	= DENOTES PAGE
PBCR	= DENOTES PALM BEACH COUNTY RECORDS
CL	= DENOTES CENTERLINE
PM	= DENOTES PERMANENT REFERENCE MONUMENT (PRM)
PCP	= DENOTES PERMANENT CONTROL POINTS (PCP)
NGVD	= NATIONAL GEODETIC VERTICAL DATUM OF 1929

SURVEYOR'S NOTES:

- BEARINGS HEREON ARE REFERRED TO AN ASSUMED VALUE OF N01°22'26"E FOR THE EAST RIGHT OF WAY LINE OF JOG ROAD.
- THERE SHALL BE NO TREES OR SHRUBS PLACED ON UTILITY EASEMENTS WHICH ARE PROVIDED FOR WATER AND SEWER USE OR UPON DRAINAGE EASEMENTS. LANDSCAPING ON OTHER UTILITY EASEMENTS SHALL BE ALLOWED ONLY AFTER CONSENT OF ALL THE UTILITY COMPANIES OCCUPYING SAME.
- IN INSTANCES WHERE DRAINAGE AND UTILITY EASEMENTS INTERSECT, THOSE AREAS OF INTERSECTION ARE DRAINAGE AND UTILITY EASEMENTS. CONSTRUCTION, OPERATION AND MAINTENANCE OF UTILITIES WITHIN THESE AREAS OF INTERSECTION SHALL NOT INTERFERE WITH THE CONSTRUCTION, OPERATION AND MAINTENANCE OF DRAINAGE FACILITIES.
- COORDINATES SHOWN HEREON ARE GRID
DATUM = NORTH AMERICAN DATUM OF 1983, 1990 ADJUSTMENT
ZONE = FLORIDA EAST
LINEAR UNIT = US SURVEY FOOT
COORDINATE SYSTEM 1983 STATE PLANE
TRANSVERSE MERCATOR PROJECTION

ALL DISTANCES ARE GROUND
SCALE FACTOR = 1.0000303
GROUND DISTANCE X SCALE FACTOR = GRID DISTANCE

S01°22'26"W (PLAT BEARING) = 00°24'09" COUNTERCLOCKWISE BEARING ROTATION (PLAT TO GRID)
S00°58'17"W (GRID BEARING)

N 830815.08
E 935226.67 = DENOTES NORTHING AND EASTING COORDINATES

THIS INSTRUMENT WAS PREPARED BY:
FORTIN, LEAVY, SKILES, INC.
CONSULTING ENGINEERS, SURVEYORS AND MAPPERS
180 N.E. 168th. STREET NORTH MIAMI BEACH, FLORIDA.
PH.: 305-653-4493 / FAX: 305-651-7152
O.N.: (072038) SURVEY (2005-242) CAD NO. 072038-p.DWG
FIELD BOOK (580/31-33 SJD)

N 829027.97
E 934908.19
CENTER OF SECTION
27-44-42
FOUND BOAT SPIKE & DISK
I.D. NOT LEGIBLE (10/4/07)

FOUND 4"x4" CONCRETE
MONUMENT
I.D. NOT LEGIBLE (10/4/07)